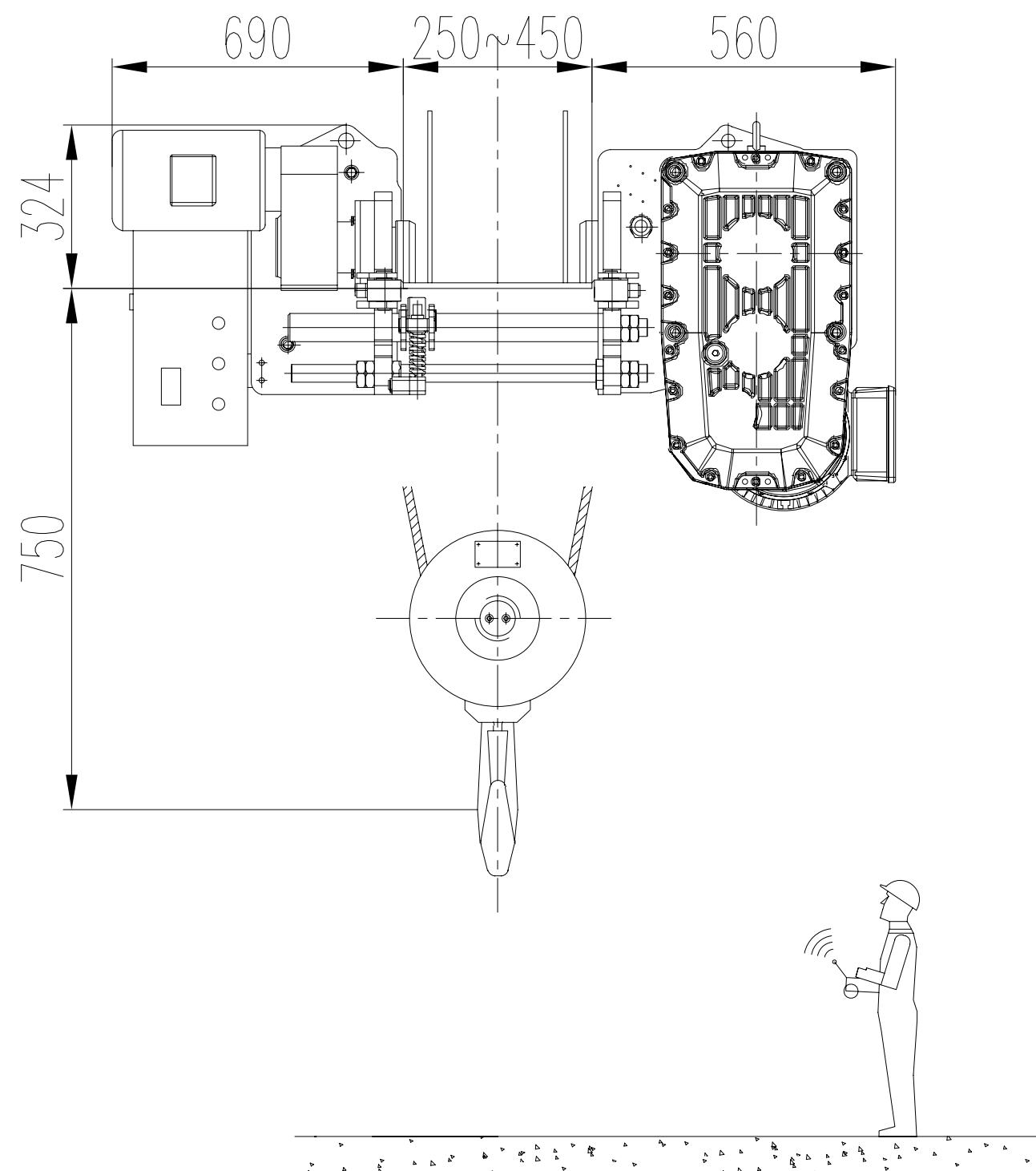



TECHNICAL DATA 技术参数

LIFTING CAPACITY 载重	10 t
LIFTING HEIGHT 起升高度	6 m
WEIGHT OF CRAB 小车重量	0.86 t
THE MAXIMUM WHEEL LOAD 最大轮压	43.6 kN
MAIN LIFTING SPEED 主起升速度	0.8/5.0 m/min
TROLLEY TRAVERSING SPEED 小车速度	2.0~20 m/min STEPLESS
LIFTING POWER 主升功率	1.5/9.5 kW
TROLLEY MOTOR POWER 小车驱动功率	0.96 kW
POWER SUPPLY 供电	415V / 3P / 50Hz
LIFTING GROUP 起升工作级别	FEM 2m (M5)
TROLLEY TRAVERSING GROUP 小车工作级别	FEM 2m (M5)
CONTROL METHOD 控制方式	Pendent control & remote control
RECOMMENDED RAIL WIDTH 轨道宽度	250~450mm
WORKING SITE 使用环境	Indoors 室内
WORKABLE AMBIENT TEMPERATURE 温度	-10°C~+40°C



					European spec electric hoist	 Yuantai Crane Machinery		
					NR10t-6m M5	General drawing	Sheet of	Weight
							Total	860kg
Mark	Qty	Revised file	Signature	Date			Reference drawing	
Design			Standard					
Check			Electric					
Verify			Approval					
Technic			Date					